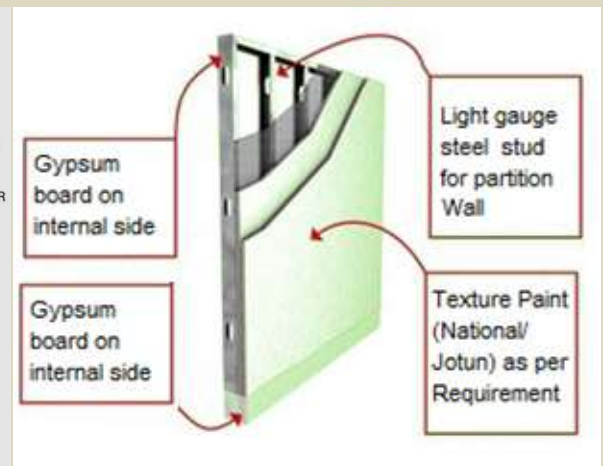
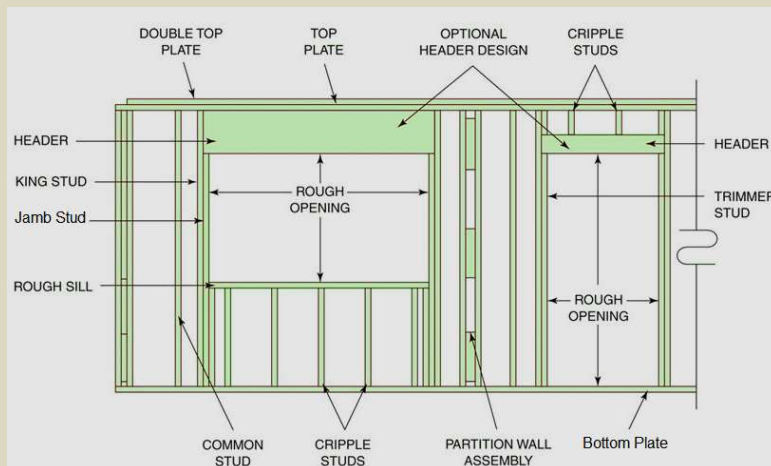


# Light gauge steel Partition wall



<b>Internal Partition Wall Cladding/Sheathing</b>
12mm Gypsum Board (1600Kg/m <sup>3</sup> )
12mm Gypsum Board (1600Kg/m <sup>3</sup> )
150mm/100mm Glass wool (32Kg/m <sup>3</sup> )
Light gauge steel Stud

## Wall Stud Sections

Sr. No.	Section	Web Depth (mm)	Flange Width (mm)	Lip (mm)	Thickness (mm)	Steel Grade (Mpa)
1	75S50	75	50	15	0.95 to 2.0	275,350* & 550*
2	100S50	100	50	15	0.95 to 2.0	275,350* & 550*
3	150S50	150	50	15	0.95 to 2.0	275,350* & 550*
4	89S41	89	41	11	0.95 to 1.15	275,350* & 550*

## Partition Walls Info:

- LGS partition walls can be built 3 to 4 times faster than masonry construction.
- LGS partition wall easy to put up & need less labour.
- It is flexible to create & divide spaces according to your needs.
- These walls are light in weight so reduce dead load of the structure & saves the cost.
- Partition walls shall be designed for sheathing load & self weight only.
- Generally we keep gap in between the floor & walls to allow deflection limit for floors as per design code criteria.